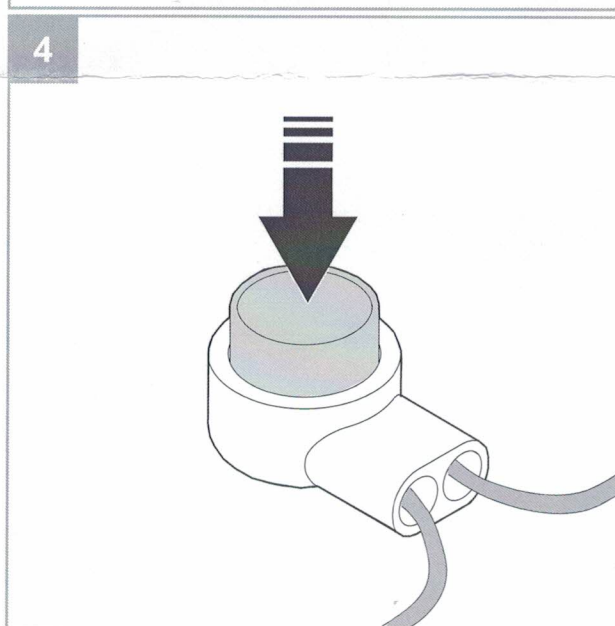
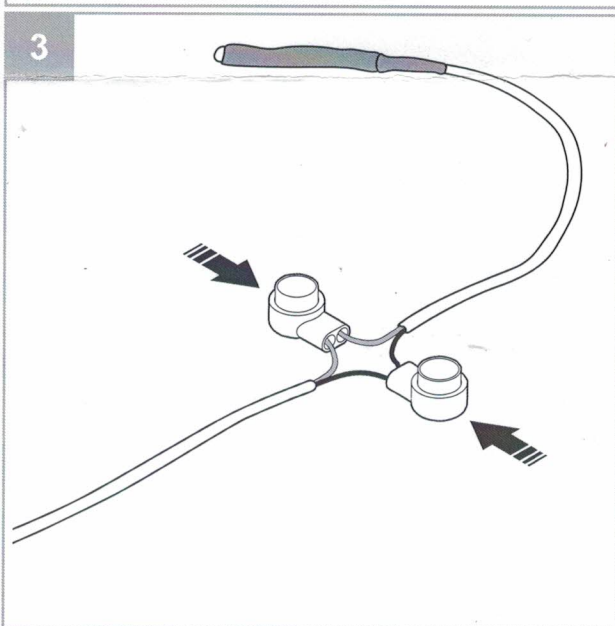
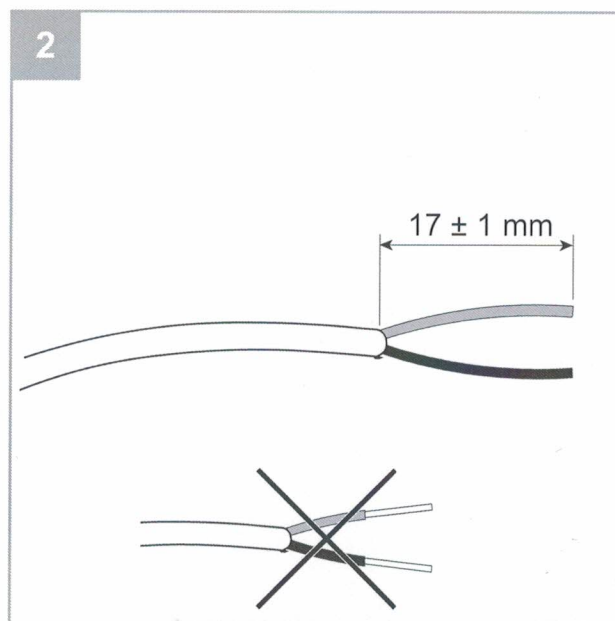
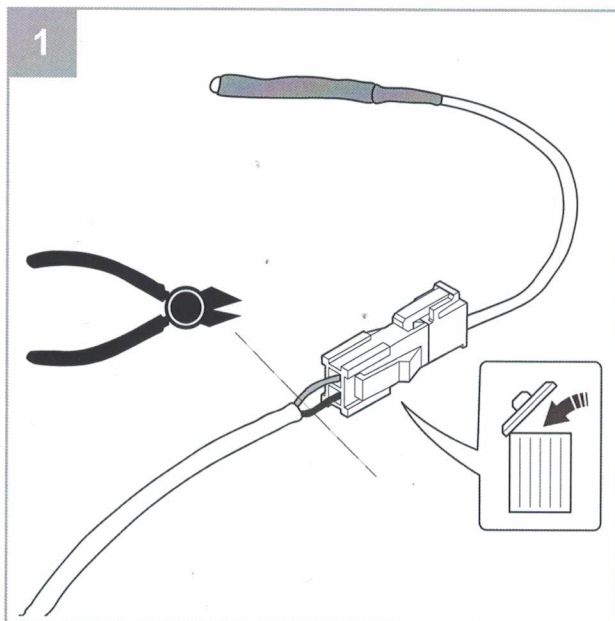




Danger

- Make sure that the mains supply to the unit is disconnected before performing any maintenance or electrical work!
- All electrical connections and maintenance work must be carried out by an authorized installer and in accordance with local rules and regulations.



1. Remove a faulty sensor.

- **Case A:** if cable is solid and does not have a Molex connector, cut cable close to the faulty sensor (maximum 100 mm).
- **Case B:** if cable has a Molex connector it must be removed together with a faulty sensor. See figure bellow for an approximate cut location.

2. Strip 17 mm of the outer cable jacket. Do not damage the inner wire jackets, they must be kept intact.

3. Insert wires to connectors. Make sure that they are inserted all the way to the end of the connector.

Pay attention to wire colours! Wires have to be connected to the same colour.

4. Use pliers to push a button until there is no gap left in order to secure inserted wires.